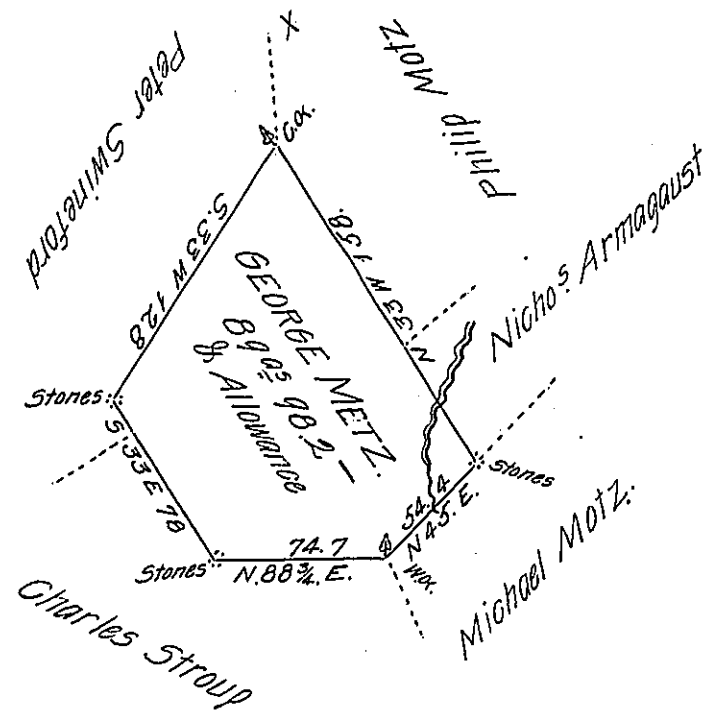


N. 33 W 158
 S 33 W 128
 S 33 E 78
 N 88 1/2 E 74
 N 45 E 54.4



The Draft of a tract of Land Situate in Mohentongo Township (Formerly Penns.) Northumberland County Adjoining Lands of Philip Metz Peter Swinford and Others Containing ~~Eighty~~ Eighty nine Acres & ninety eight perches & two tenth of a perch. Surveyed unto George Metz on the 26 day of March 1774 by Virtue of his Warrant Dated on the 9 Day of December 1773 as pr. field note in the hand hand writing of William M. Murry. Resurveyed on the 13 day of April 1810. Agreeable to the above Drft. With Usual Allowance of Six P.C. for Roads & C.

Thos Woodside D.S.

To Andrew Porter Esquire
 Surveyor General

IN TESTIMONY that the above is a copy of the original remaining on file in the Department of Internal Affairs of Pennsylvania, made conformably to an Act of Assembly approved the 16th day of February, 1833, I have hereunto set my Hand and caused the Seal of said Department to be affixed at Harrisburg, this eleventh day of December 1905.

Loac N. Brown
 Secretary of Internal Affairs.